



AceroEngineering LLC

Steel Detailing Services

What we DO

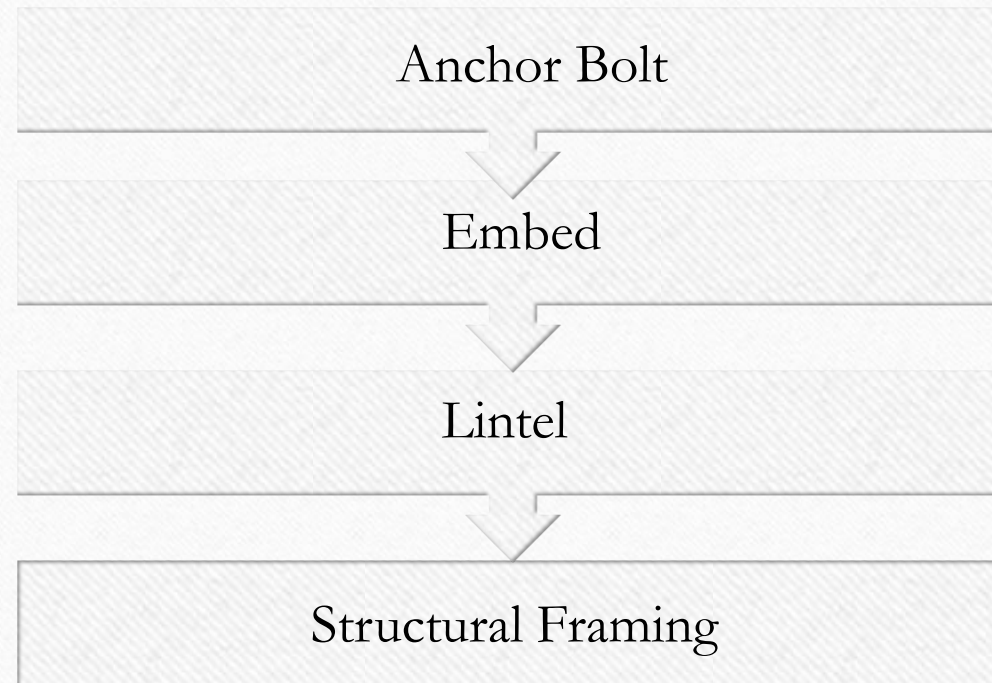
- Structural steel detailing
- Miscellaneous steel detailing
- Estimodeling /Estimation.
- Procurement reports like ABM, Shop bolt summary, field bolt summary.
- Production reports like CNC, KISS and DXF and other reports as per fabricator request.
- Our detailers work within the guidelines set by AISC & OSHA.

Structural steel detailing

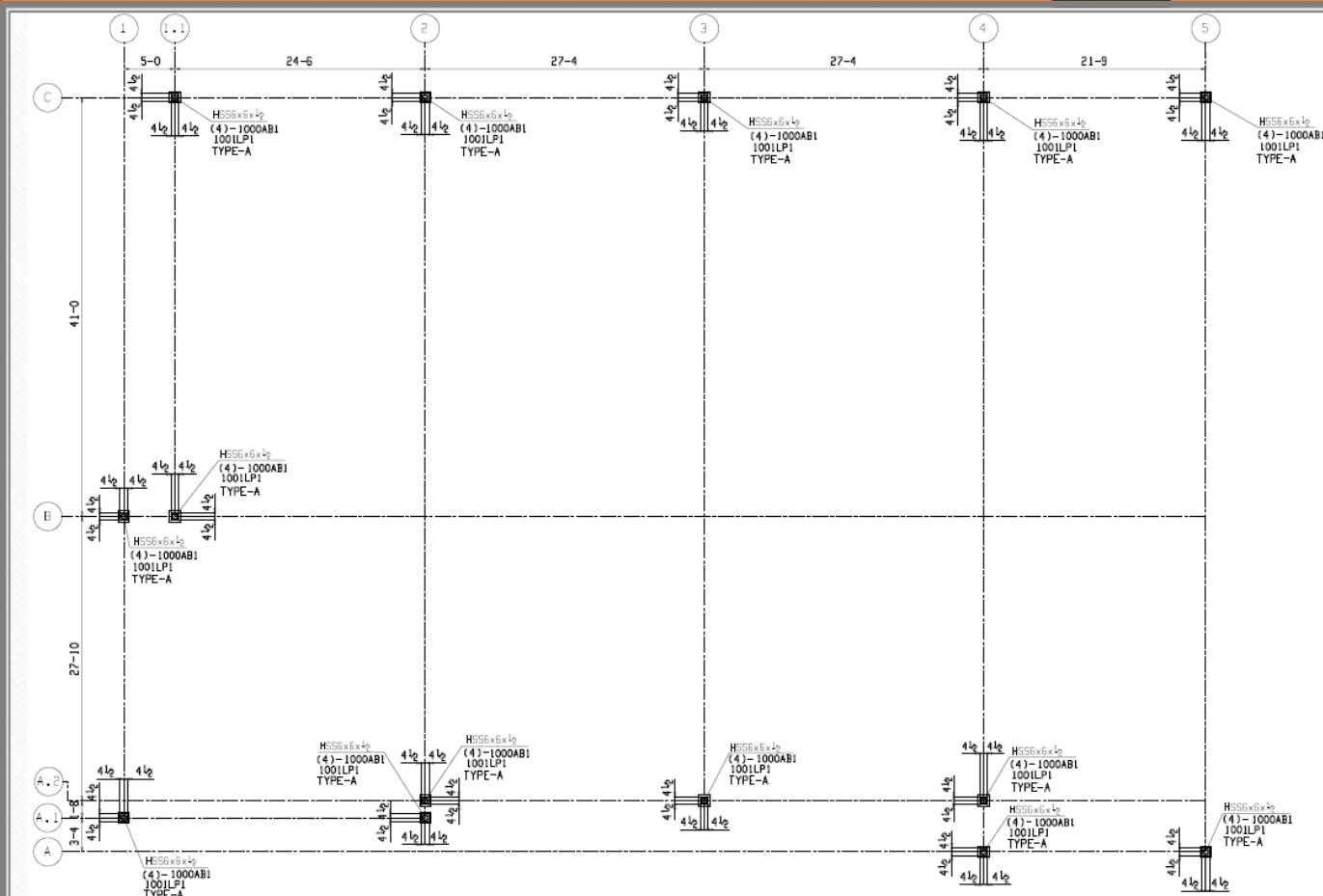
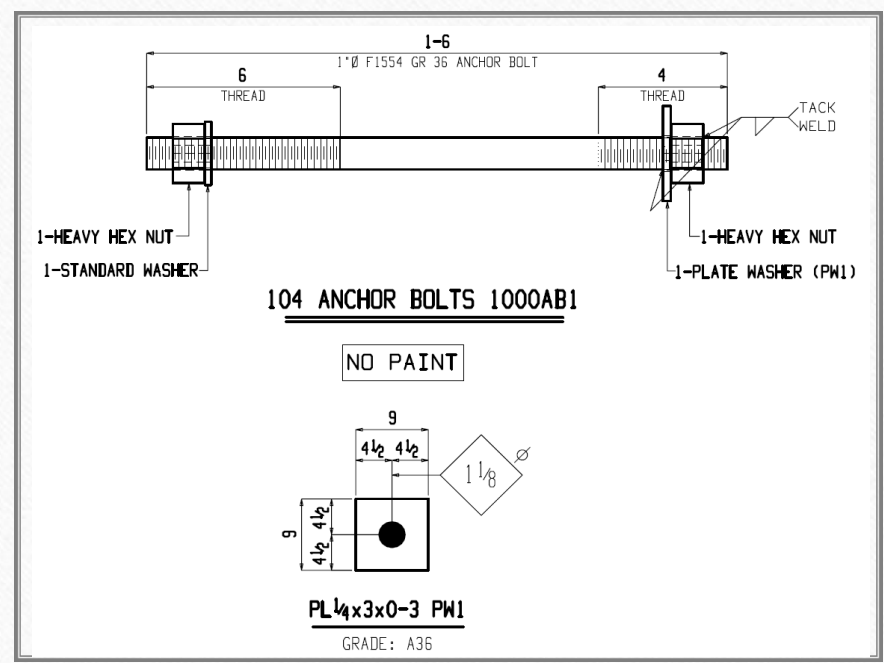
- Our team of experienced professionals, who have worked on numerous projects across the globe, takes the necessary steps to ensure that our work is done with the highest level of quality.
- Our approach to every project is highly prioritized, with careful attention paid to the unique requirements and challenges of each project.
- Utilizing the latest technology at our organization has allowed quicker and more efficient work, and we never compromise on the level of quality we provide to our clients.
- Our expert team comprises seasoned professionals who have acquired extensive knowledge of structural steel detailing. With their intricate understanding of this field, we guarantee that every project is executed with the highest degree of accuracy, efficiency, and quality.



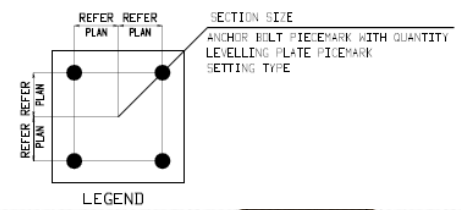
Structural steel detailing

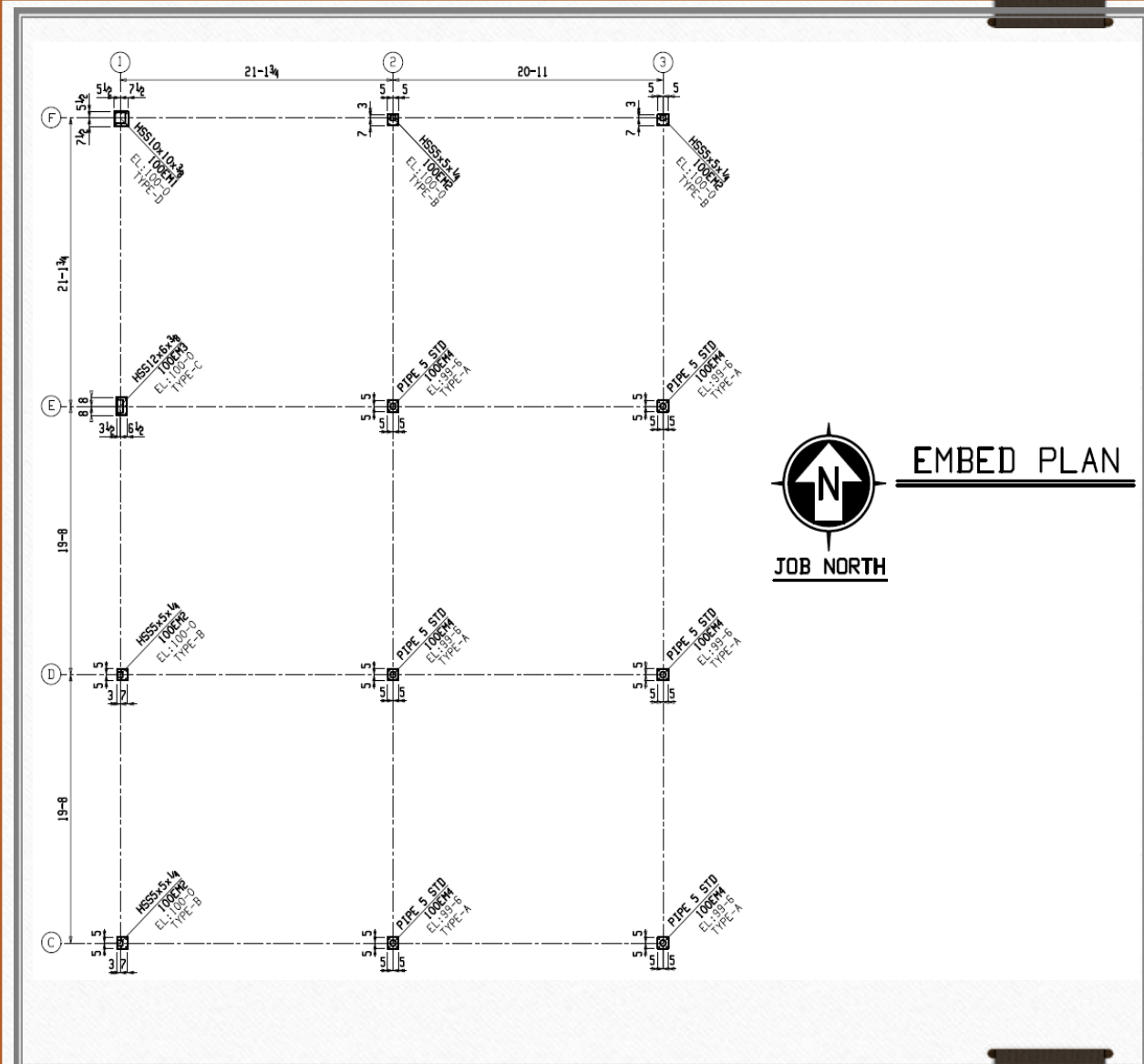


← Erection Sample
Detail Sample

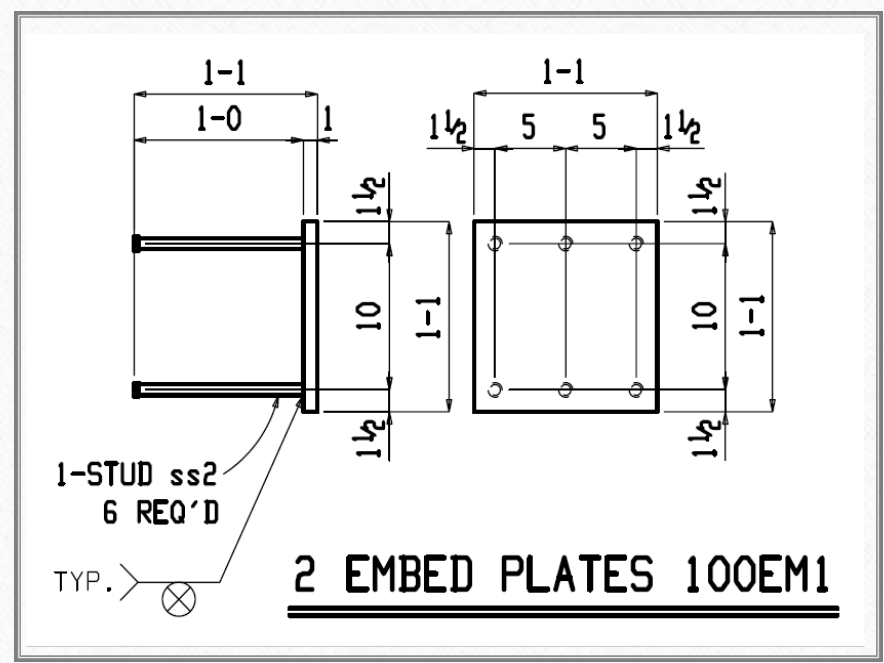


ANCHOR BOLT PLAN





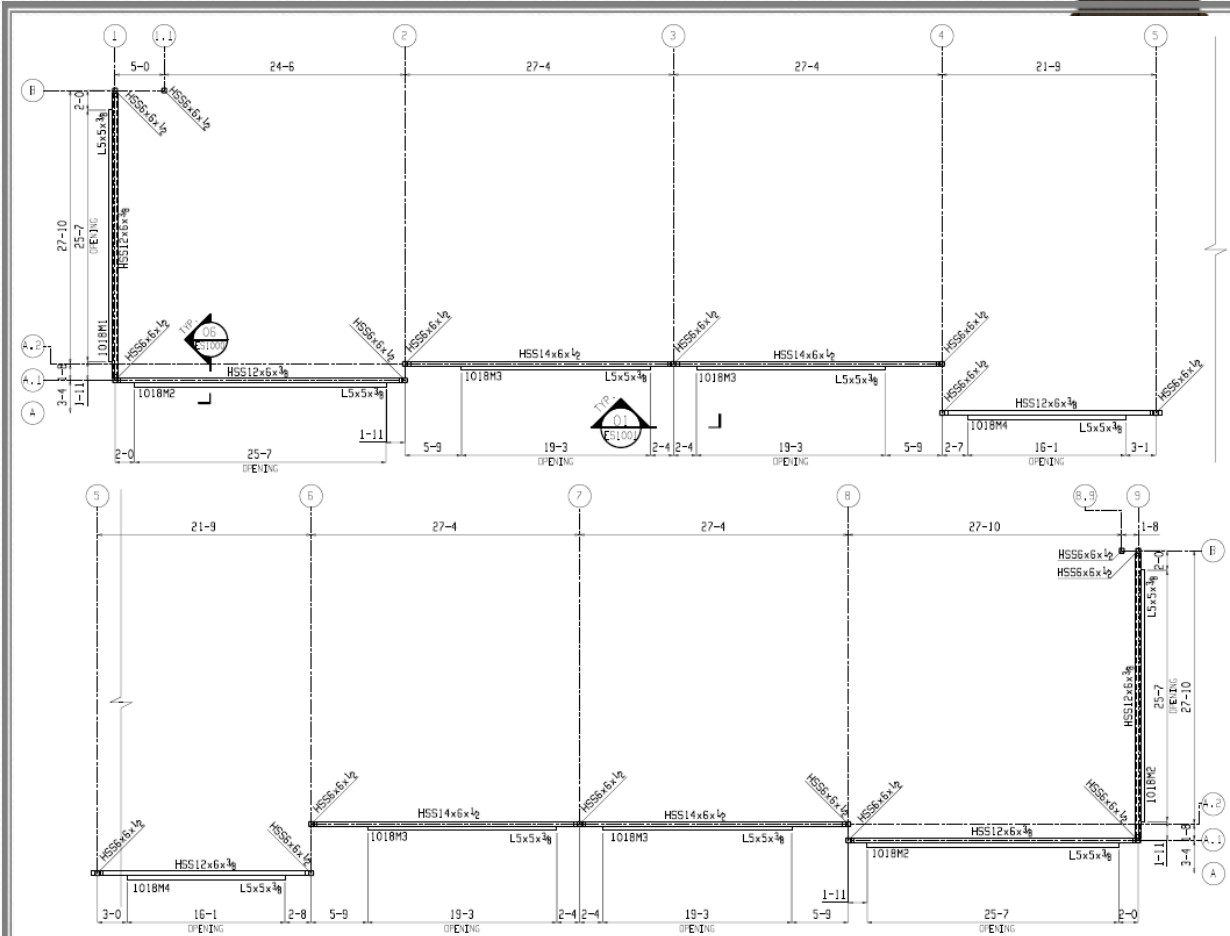
← Erection Sample
 Detail Sample



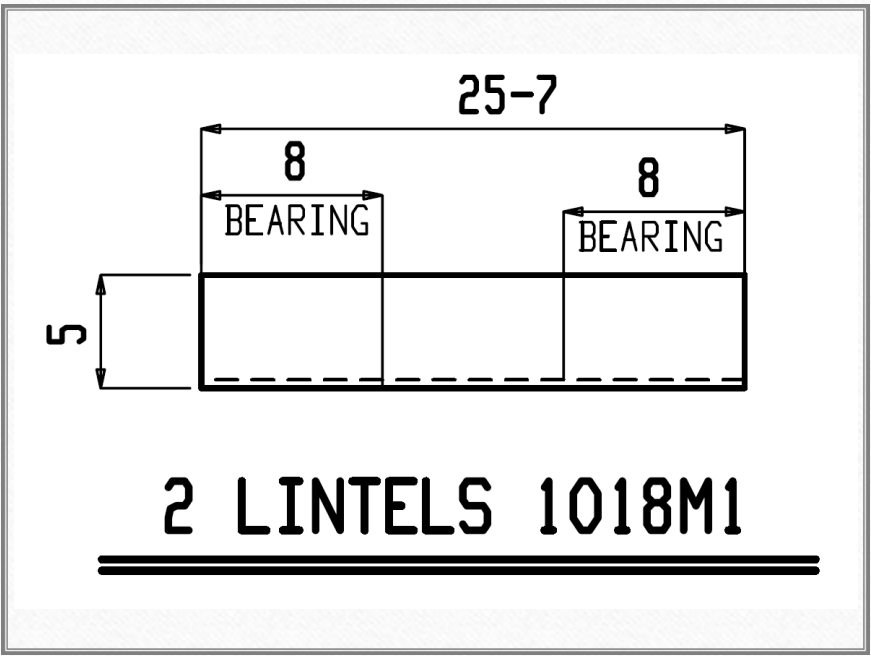


Erection Sample

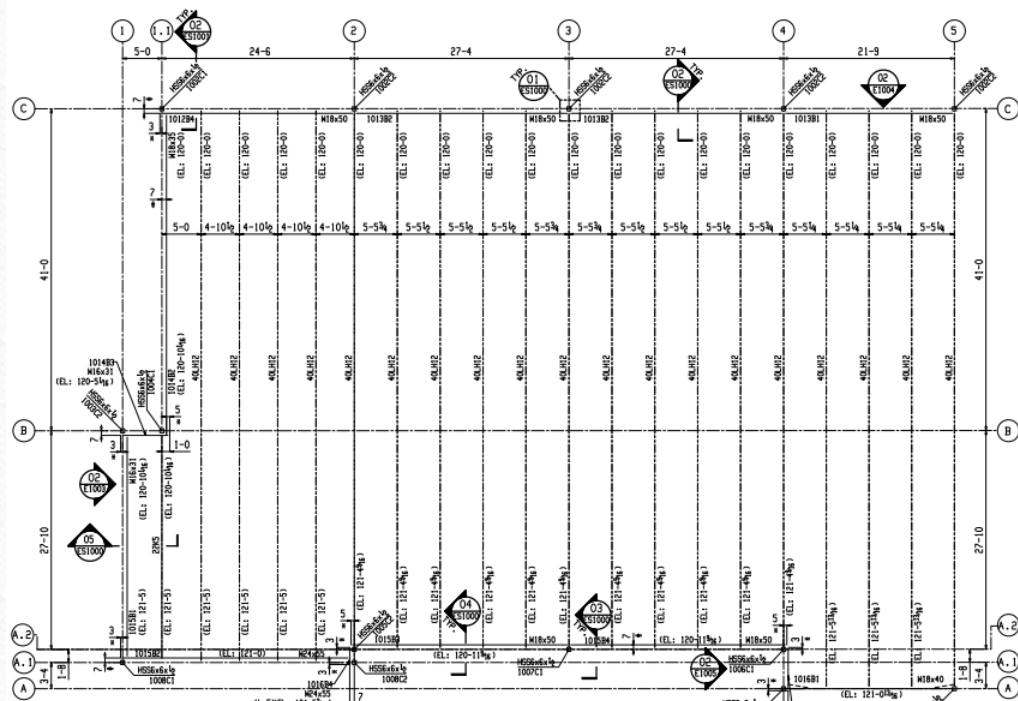
Detail Sample



LINTEL PLAN



Erection Sample

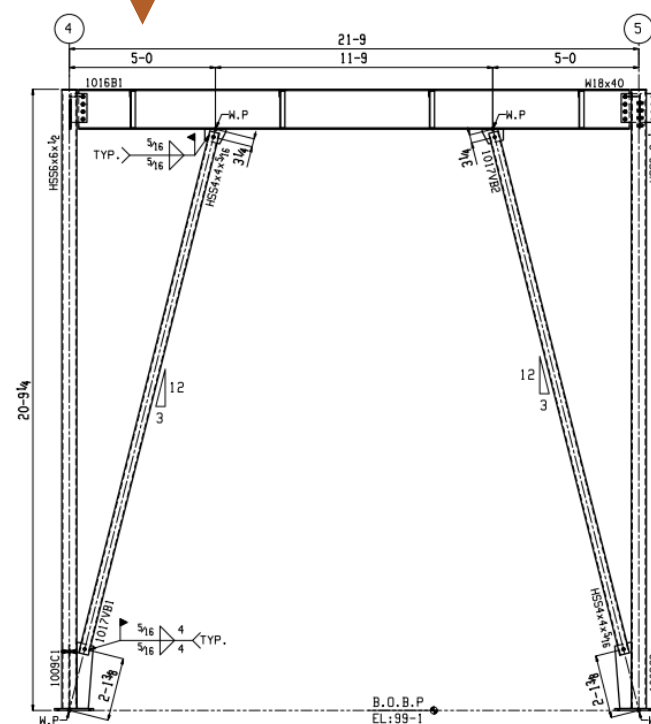


FRAMING PLAN

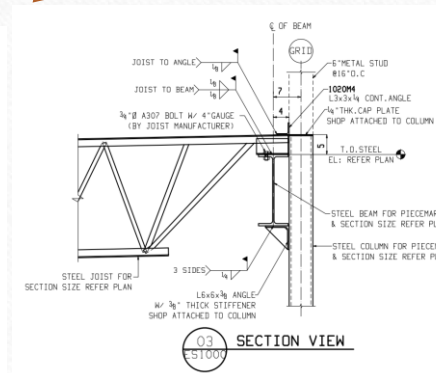
TOP OF STEEL ELEVATION: 119-7 (U.N.O)

NOTES:

- 1) # - INDICATES BEAM IS 7" OFFSET FROM GRID LINE
- 2) * - INDICATES BEAM EXTENSION
- 3) L.E- INDICATES LEFT END
- 4) R.E- INDICATES RIGHT END
- 5) FOR SECTION DETAILS REFER SHEETS ES1000-ES1002

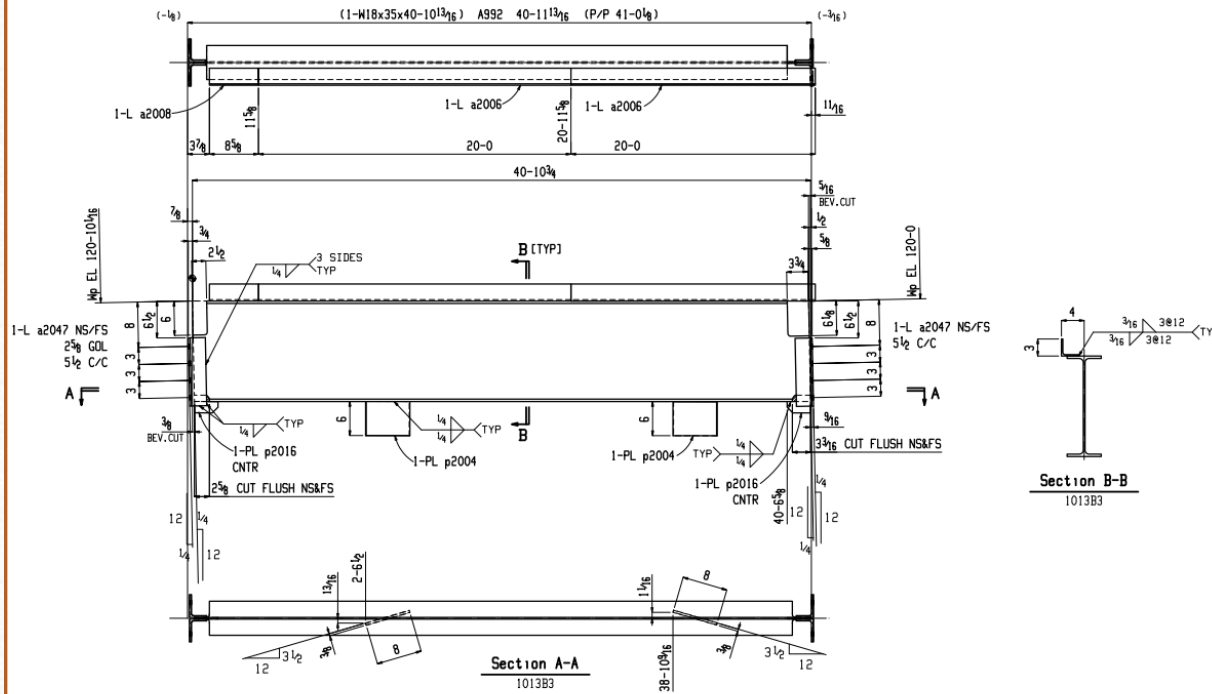


01 ELEVATION VIEW



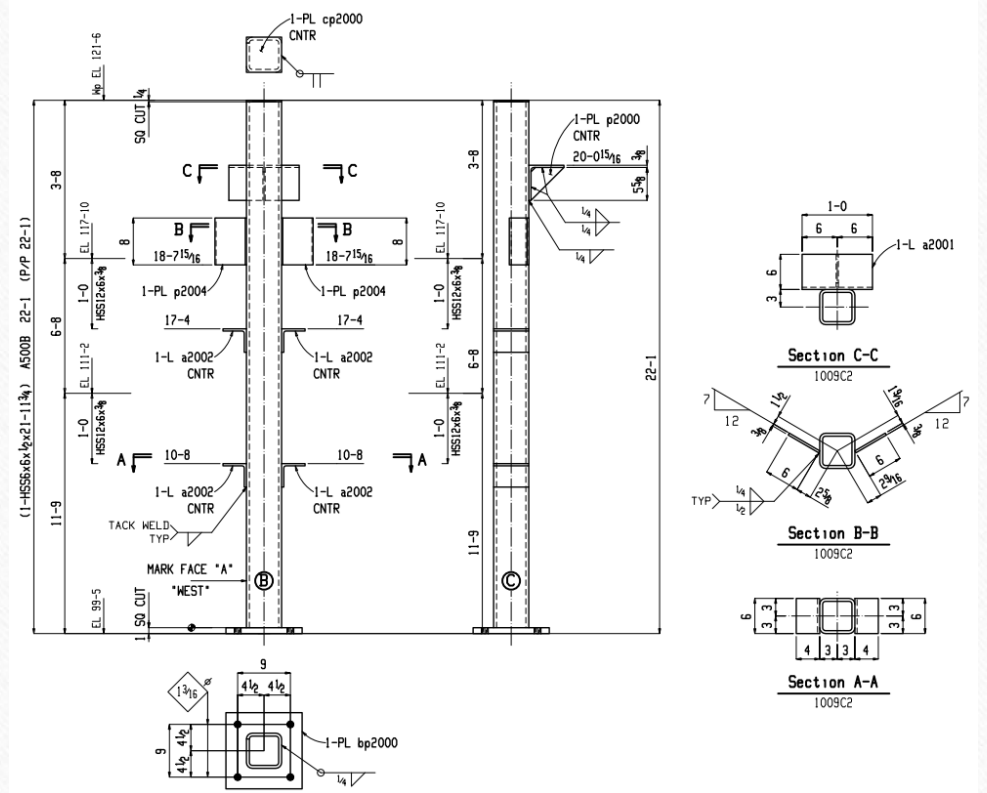
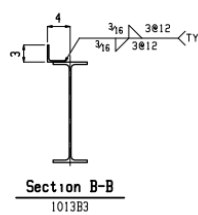
03 SECTION VIEW

Detail Sample



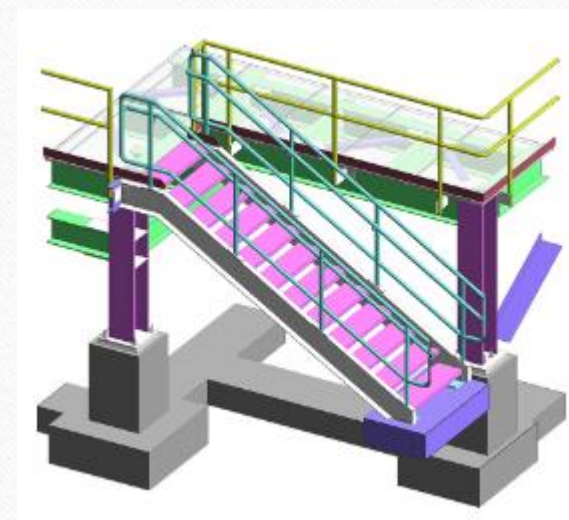
ONE BEAM 1013B3

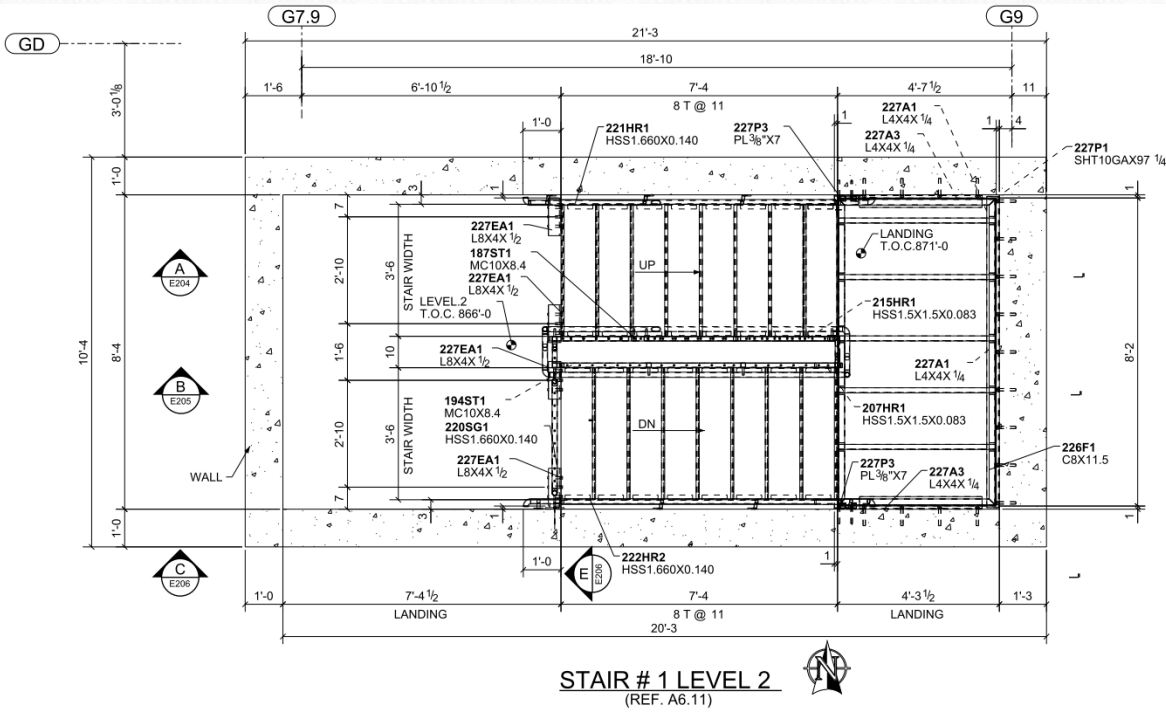
W	171/16 x 5/16
F	6x7/16
K	1 1/4 x 7/8



Miscellaneous steel detailing

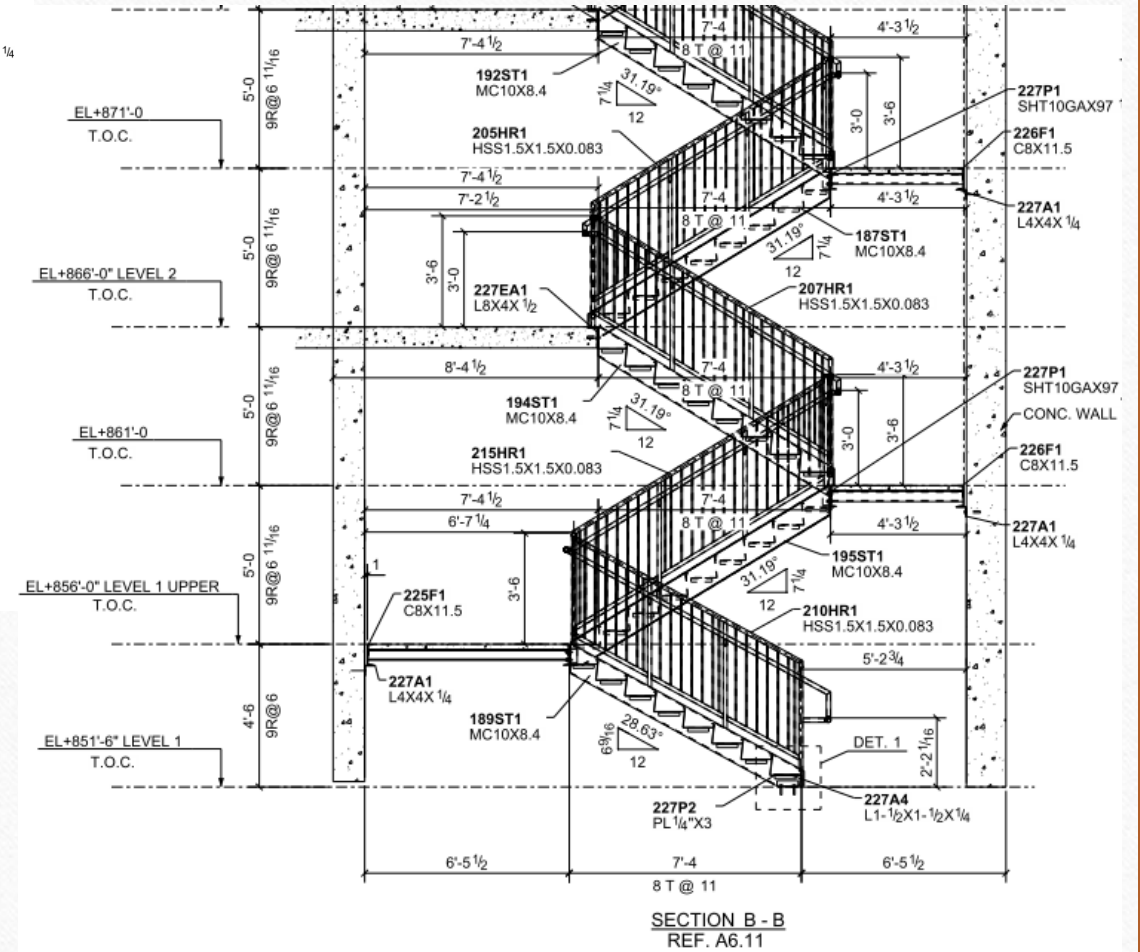
- Our team provides miscellaneous components, from staircases and handrails to ornamental features. We approach every detail with meticulous attention.
- We detail fixed ladders, cage ladders, or ship ladders, depending on their specific use cases. As with staircases, ladder design should meet safety and code requirements like those of OSHA.
- We provide handrails, guardrails, or grating for walkways. Proper detailing of these items can help ensure the safety and longevity of a building's infrastructure.





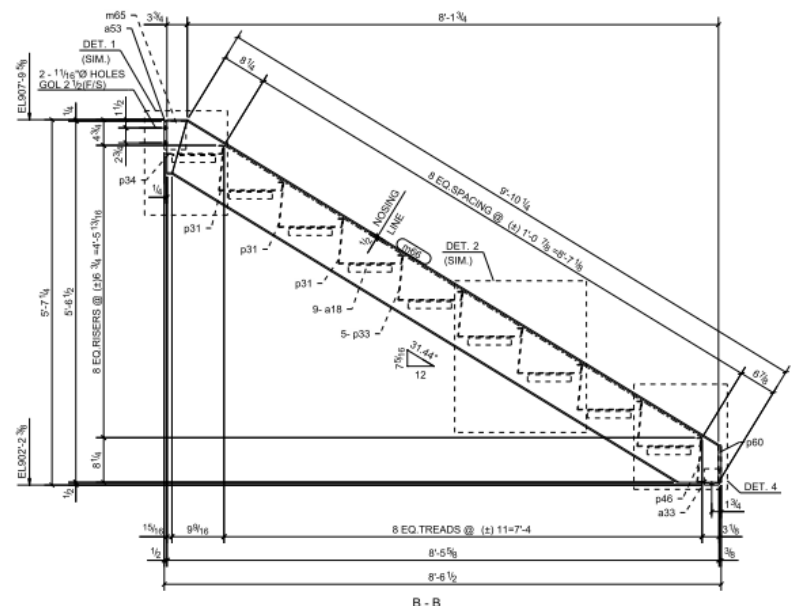
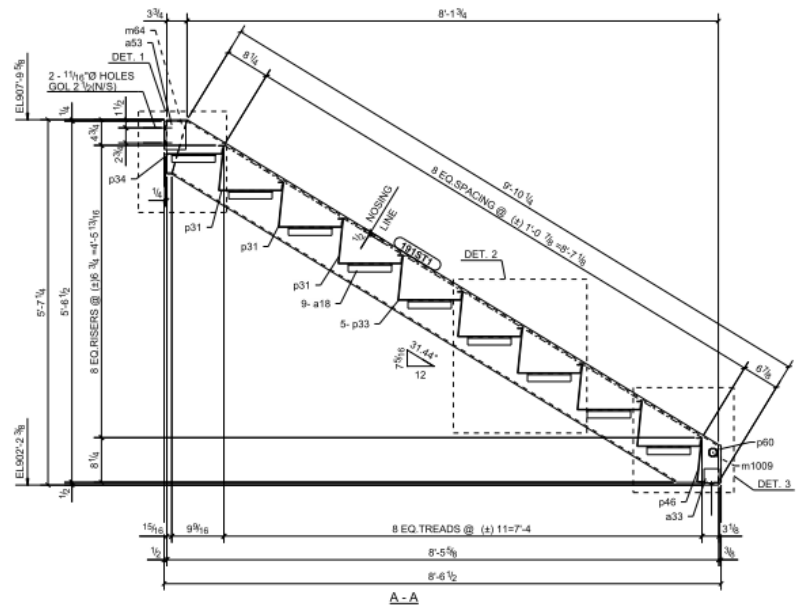
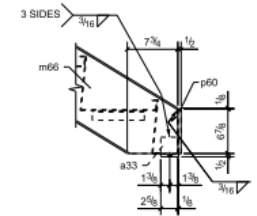
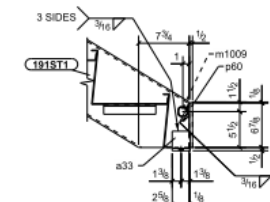
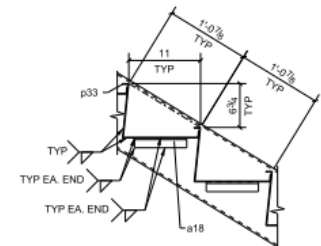
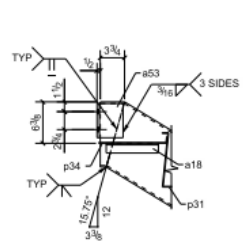
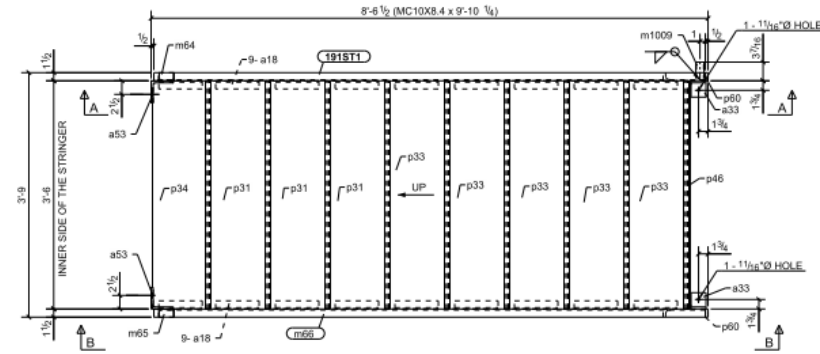
STAIR # 1 LEVEL 2
(REF. A6.11)

Erection Sample →



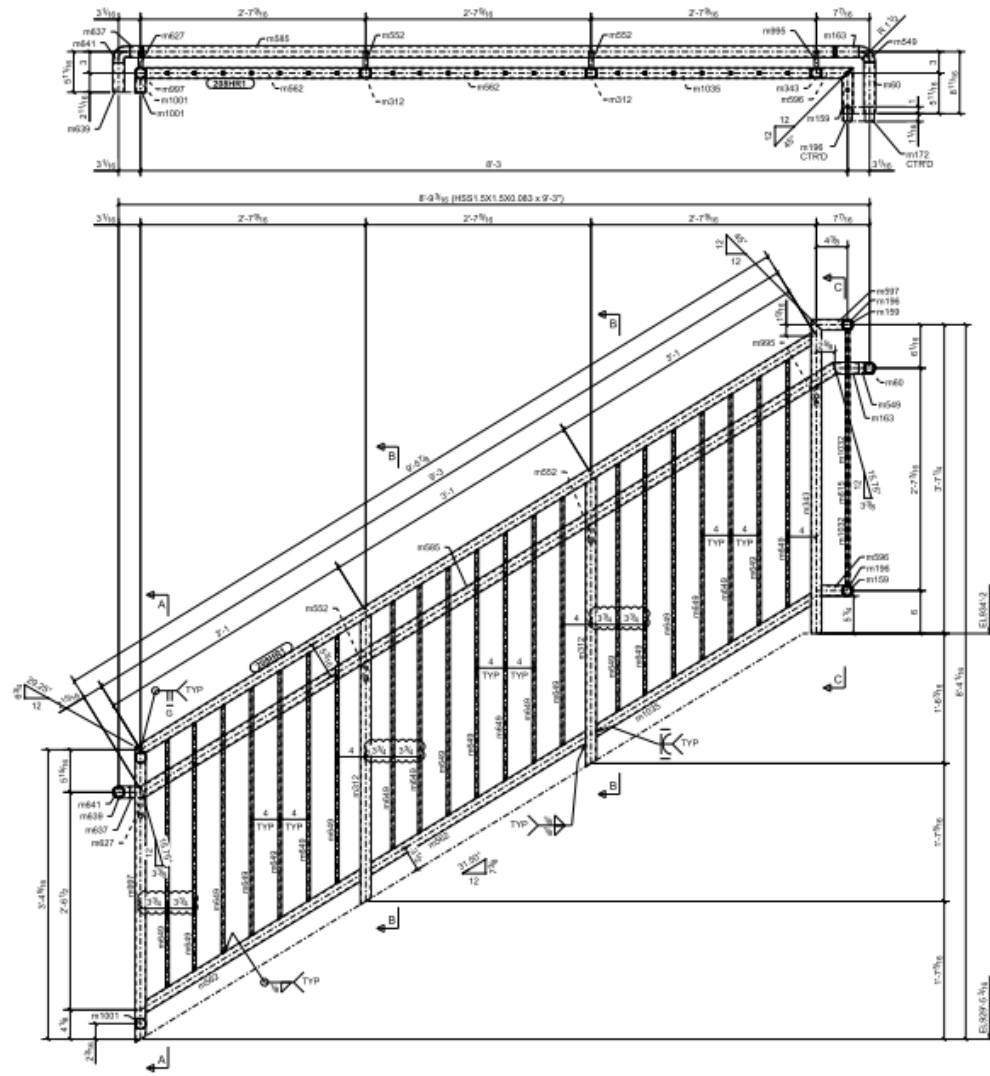
SECTION B - B
REF. A6.11

Stair Detail Sample

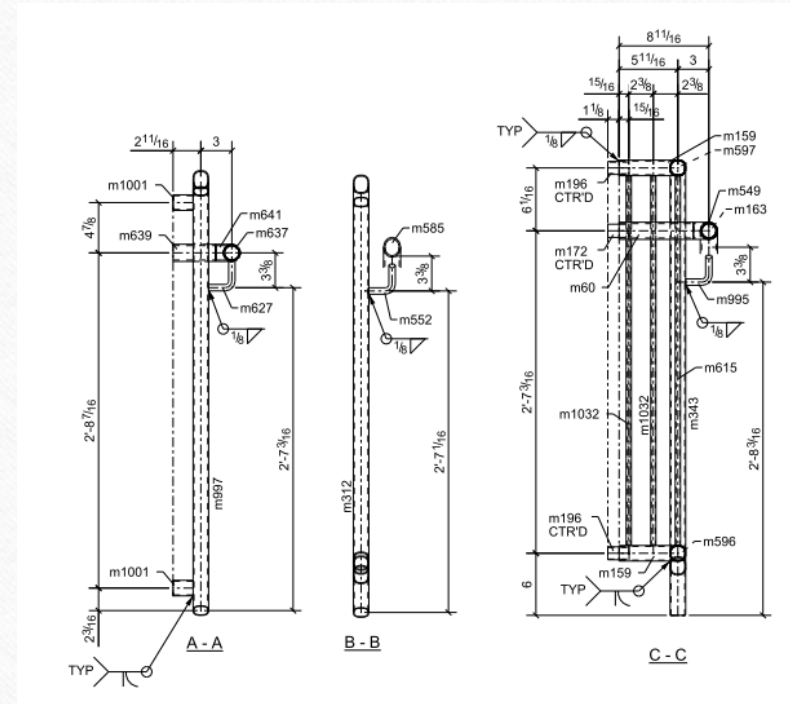


1 ~ STRINGER ~ 191ST1

Railing Detail Sample



1 ~ GUARDRAIL ~ 208HR1



Why AEL

- Timely delivering of Project.
- Maintaining quality of work with standards.
- Highly experienced professional team.
- Implementing all fabricator standards in drawing.
- Thoroughly following AISC & OSHA guidelines.

Contact us



1710 FM-423 UNIT 600,FRISCO, TEXAS 75034



<https://aceroengllc.com/>



info@aceroengllc.com, sales@aceroengllc.com



+1-(469)-581-0708

Acero Engineering LLC